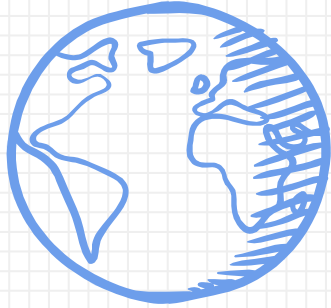


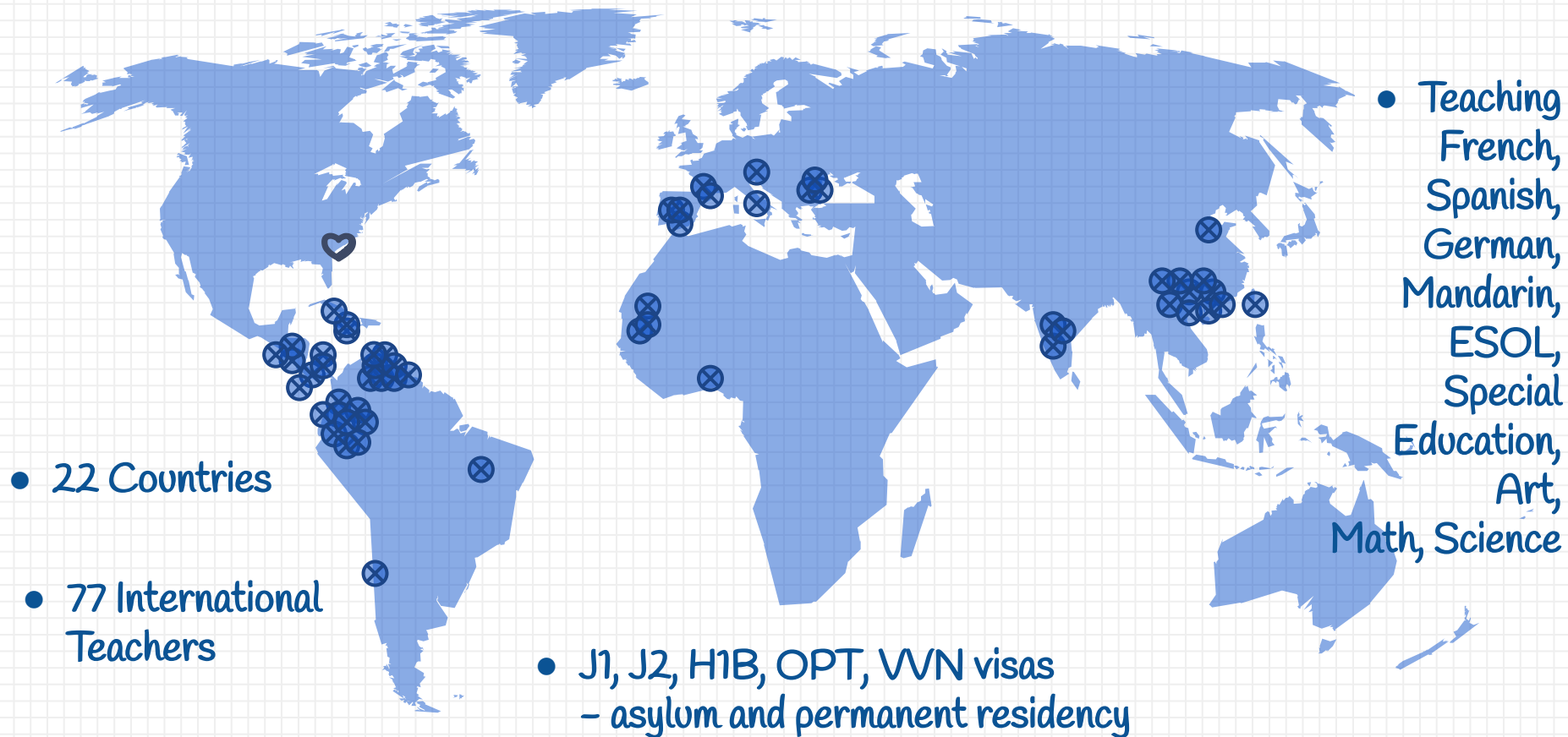
Recruiting and Supporting International Teachers



Global C.R.E.D. Conference



Giving Our Children the World



International Teachers in Lexington One



Being Part Of Lexington One

Jesús Redondo Menéndez



The background is a light blue grid with various scientific and mathematical doodles in blue ink. On the left side, there are icons for an atom, a beaker with a flame, the chemical formula H2O, a globe, a lightbulb, a brain, a molecular structure, a graph with axes, and the equation E=mc^2. On the right side, there are icons for a calculator, a plug, a globe, a book, a cell, a star, a test tube with a plant, a DNA helix, a planet, and the chemical formula H2O.

The real voyage of discovery consists
not in seeking new landscapes,

but in **HAVING**

NEW EYES.

~Marcel Proust



First Layers of Support

Supporting Our Teachers

Needed Teacher Supports

Teachers on H1B who are New to the US

- ✘ More up-front expense for district and teacher
- ✘ Support for transition is through our partnership with the teacher.
- ✘ Immediate needs on arrival:
 - ✘ food, temporary and long-term housing, transportation
 - ✘ help establishing banking, cell phone
 - ✘ navigation of processes surrounding Social Security Card, Driver's License, Car
 - ✘ furniture, dishes, toiletries, etc. (especially beds)



Supporting Teachers Transitioning from Abroad

Pay School
Lunch Account
for teachers
for first 3
months

Start-up
grants for
immediate
needs
(electricity
hook-up,
water, deposit)

Gift Cards for basic needs,
amount based on number of
family members:
*Aldi, Target,
Walmart, etc.*

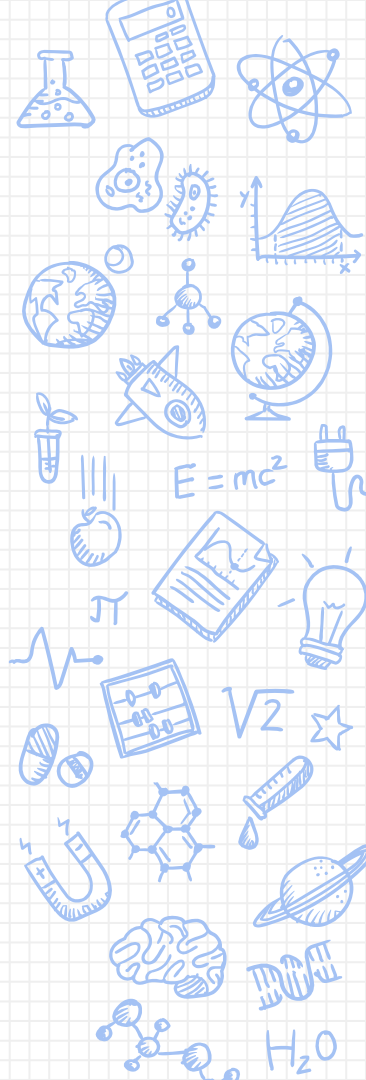
Emergency Assistance
for crisis situations –
likely needed in the
event of any major
health crisis.

*consider certification
assistance

Needed Teacher Supports

All International Teachers

- ✗ Teachers benefit from a coaching cycle
- ✗ Oftentimes the education system is very different and/or student/parent expectations are different
- ✗ Help when contacting parents
- ✗ Department level support as well as school admin and district level support



The Important Questions

- × Ask specific questions.
Where are you staying? Do you have a bed/mattress? What are you eating? What's one thing we could do to ease your transition?
- × Check in on driving & transportation.
Teachers can drive for 90 days on International License. Driving is very different (or even new) for many of our teachers!
- × Support through a lot of change.
Educational practices are probably pretty different in the teachers home country. Assume best intentions & offer lots of support.
- × Know where your teachers are coming from & what or who they left behind.
Some of our teachers left some really hard places and are very concerned about family and friends left behind.



International Teachers in Lexington One



MYRIAM
FRANCE



Alone we can do so little, together we can do **SO MUCH.**

~Helen Keller



